



**BIG
EAGLE**

COMMITMENT

SERVICE COMMITMENT

Big Eagle provides our customers with the highest quality of service using dependable, high performance equipment operated by professionally trained and skilled operators.

Experienced throughout British Columbia, Alberta and Saskatchewan, Big Eagle has taken our field experience and applied it to specialized, custom-designed equipment and technology to meet our customers' needs.

Big Eagle is committed to providing our customers with the highest level of professional, dependable service and performance available in the industry today.



**BIG
EAGLE**

Project
zero

0 - INJURIES
0 - SPILLS
0 - EVENTS



FLAMELESS NITROGEN UNIT



HSE SAFETY PROGRAM PROMOTES AND ENFORCES THE FOLLOWING:

- General Safety Rules and Regulations
- Transportation Canada Regulations
- Hazard Identification, Risk Assessment, Elimination, Control and Emergency Response Planning
- Event Reporting, Investigation, Corrective Actions and WCB Injury Awareness
- Safety, Tailgate and Joint Health and Safety Committee Meetings
- Pre-Job Safety Inspections and Field Level Risk Assessment



COMPREHENSIVE IN-HOUSE SAFETY TRAINING



SAFETY TRAINING



SAFETY COMMITMENT

Big Eagle considers safety a number one priority. We employ a full-time Safety Coordinator to manage and continuously enhance our in-house safety program.

Our commitment to safety is evident in the education and training provided to new and existing personnel that includes orientations, safe work procedures, hazard recognition and assessment, safe driving policies, safety equipment and incident and accident reporting. Our employees adhere to provincial and federal 'Hours of Service' regulations.

Big Eagle's safety program promotes safe work practices and ethics, teaching our employees job responsibilities in a safe work environment. As part of our safety program, field employees arriving on a new job participate in safety meetings and fill out pre-job inspection forms prior to commencing work in the field. Also as part of our safety program, Big Eagle performs regular site safety inspections and job audits to verify compliance with employee safe-work practices and job site safety procedures.

Big Eagle Services has always taken pride in our Health, Safety and Environment ("HSE") Program, that protects the safety and well being of all employees, contractors and the general public in all aspects of our business operations. This program requires absolute compliance with all safety policies, procedures and legislation.

PROJECT ZERO

In an effort to enhance the awareness of the HSE Program and its policies and procedures, Big Eagle has developed an awareness system called "Project Zero". This project will oversee extended training and awareness of the basic safety requirements that can be otherwise forgotten during busy day-to-day field level operations. Our objective is to have zero injuries, spills or events.

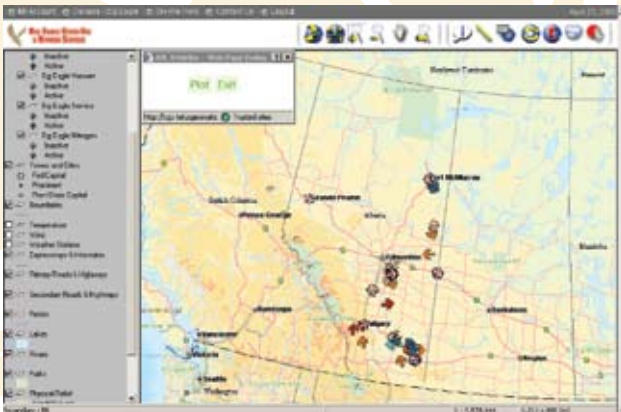


TECHNOLOGY COMMITMENT

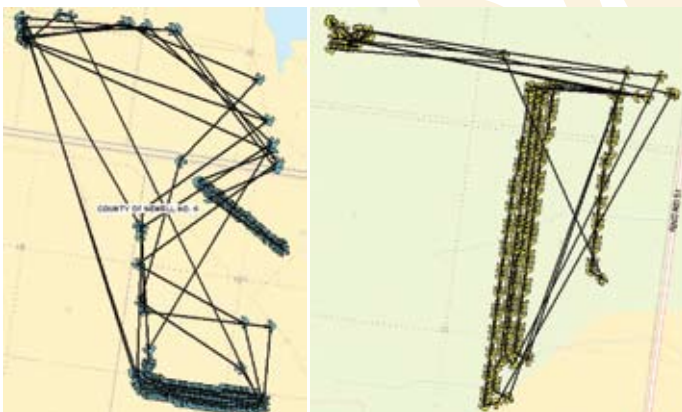
Big Eagle's commitment to safety is evident in the implementation of GPS technology, which is installed in all of our units and used to assist in monitoring all field activity. It provides effective and efficient recorded data to our customers, including accurate daily tracking down to the minute. This technology accurately confirms hours billed.

By employing the latest in-house technology, as well as, Geographical Information System tools provided by Telus Geomatics, Big Eagle is able to better serve our customers and perform detailed tracking of our fleet around the clock. Big Eagle's operators and equipment are monitored 24 hours a day, which leads to effective productivity and safety through accountability.

Big Eagle continues to be a leader in customer service by consistently evolving and utilizing the latest advancements in technology.



GPS FIELD ACTIVITY REPORT



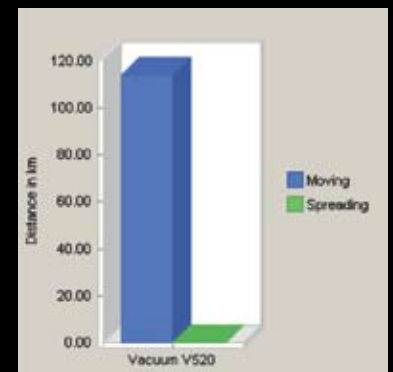
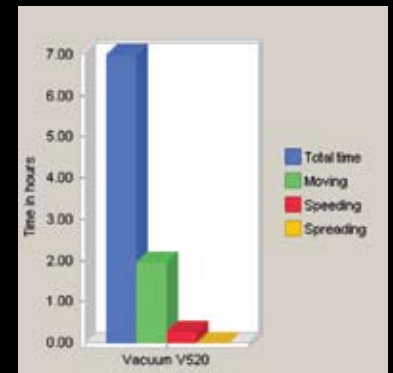
GPS TRACKING OF SPREAD FIELD

GPS tracks utilization and provides billing accountability.

BENEFITS FOR GPS TRACKING

- Accurately confirms hours billed
- Detailed 24 hour tracking for the entire fleet
- Effective productivity and safety through accountability
- Accurate tracking of the spread field

ACTIVITY REPORTS





**BIG
EAGLE**

CORPORATE HEAD OFFICE
Suite 200, 407 - 3rd Street SW
Calgary, Alberta
T2P 4Z2
Phone 403.261.8777

TOLL FREE 1.800.227.6392



Bonnyville	780.826.5200	•	Fort McMurray	780.715.0990	•	Medicine Hat	403.526.5933
Brooks	403.793.7930	•	Fort Nelson	250.774.2500	•	Rainbow Lake	780.956.3223
Calgary	403.236.4471	•	Fort St. John	250.787.7149	•	Red Deer	403.347.6222
Camrose	780.672.3863	•	Grande Prairie	780.402.6660	•	Swift Current	306.773.3307
Carnduff	306.482.3188	•	High Level	780.926.5095	•	Weyburn	306.848.0055
Edmonton	780.468.6659	•	Hinton	780.865.2757	•	Zama City	780.683.2664
			Lloydminster	780.808.8793			

www.big eagle.ca • info@big eagle.ca